

I : Layout & Excavation



The layout is discussed and evaluated with the customer. Setbacks, slope angle, water runoff, shade, septic system location, well location and many other variables are taken into consideration before finalizing the location of the pool.

The topsoil is stripped and set aside. The pool is normally excavated with a back hoe. Usually all the dirt will stay on site to level the pool area. If the yard is flat or the pool is built into a hill, some dirt may have to be hauled off site.



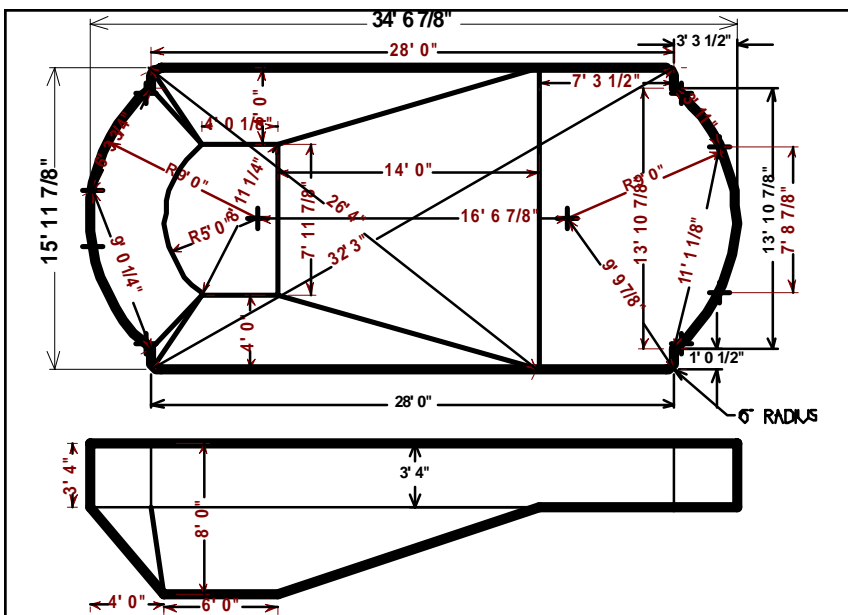
What a mess! There is no getting around the fact that your yard will be destroyed, although only temporarily. The excavation process usually only takes 4 to 5 hours, as long as no obstructions are hit. Rock, underground water & trash are the most often encountered obstacles.

2: Wall Structure Assembly



The wall panels and braces are laid out and placed in the desired locations.

The panels are bolted together. Notice, there are deck support braces every three feet. This steel wall construction is the strongest vinyl pool structure in the industry.



The walls are leveled and squared. All dimensions are checked and re-checked. All of our pools are installed within exacting tolerances.

3: Concrete Collar/Footer



3000 p.s.i. strength concrete is poured around the entire perimeter base of the steel panels and steps.

Look at that bracing system! With the amount of A-frames and deck support braces used, no wonder there is a lifetime warranty on the structure.



The concrete collar lock's the entire pool structure together.

4: Plumbing & Coping



2" Aluminum bull nose coping is installed on top of the wall. This is used to hold the liner in place and give a clean finish to the front of the concrete deck.

Cantilever coping is also optional.



A layer of dirt or sand is placed over the collar, and the plumbing is installed. We use 1.5" and 2" Sch-40 Rigid and Flex pipe.



The pipes are installed back to the filter and pump system. All suction lines are valved, and all bottom drains are protected with a government mandated anti-entrapment suction protection system. All components are controlled by an electronic control system.

5: Backfill & Electric



After the plumbing is complete, the pool is backfilled. The rough grading is completed at this time.

When we say no sub-contractors we mean it. We even do our own electrical service to the pool. A 30 amp service is run back to the pool from the main service panel at the house. All electrical work is done to the most current NEC codes, and is inspected by an independent inspection agency.



The pump, light, heater, and all other options are wired to and controlled by the main control box. You even have the option of waterproof floating remote to control everything from the comfort of your floating lounge chair in the pool.

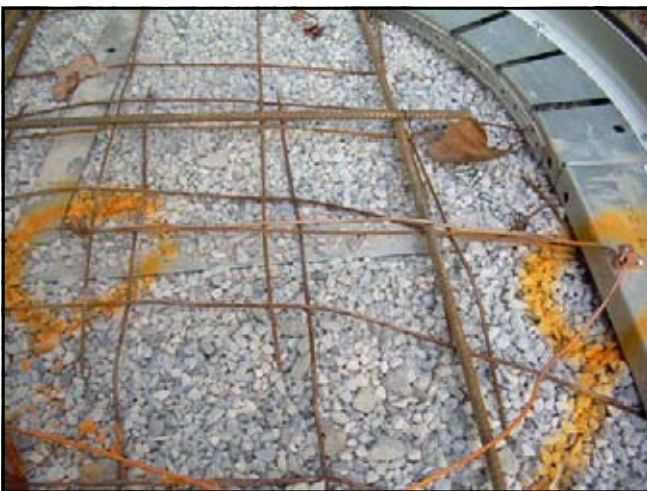


6: Form up & Bonding



The pool is now ready to be formed up for the concrete decking. Straight forms, curved forms, or a combination of both can be used to create any amount and shape of decking around the pool. Plain, stamped, colored, or textured concretes can be installed

A bed of crushed stone is installed. Wire and rebar are standard in all of our concrete decking. The ladders and rails can now be set in the pool.



All re-bar and wire must be bonded and inspected. #8 Ground wire is used to connect all metal fixtures around the pool to create a common bonding grid.

7: Concrete Decking Pour



The concrete deck is now poured. We use 3500 p.s.i. strength concrete.

The concrete is placed and then floated smooth.



PVC control joints are used at 6' to 8' intervals to minimize random cracks. **Remember: Concrete will crack!** With these joints, we now can control where it will crack.



The concrete is troweled flat and smooth and a broom finish is applied to provide a non-skid finish



8: Bottom Placement



The walls are cleaned and the bottom is prepared to install the vermiculite base. The bottom is compacted to insure a solid bottom.



A mixture of Portland cement and vermiculite is placed on the bottom of the pool to make a smooth semi hard surface. Although the vermiculite & cement dry to a hard bottom, the material is not abrasive, and is ideal for protecting the vinyl liner.

The finished pool bottom!



9: Liner Installation and Fill



The liner is placed in the pool, stretched out, and snapped into place.



Powerful vacuums pull the air from behind the liner and hold it in place until the water fills the pool.



Lights, skimmers, steps and returns are now installed.



The pool can now be filled.

I O: Startup & the Finished Product

Once the pool is filled our service manager gives you a thorough lesson on all of the operations of the pool, filter, and cleaning equipment. Now all you have to do is **enjoy!**

